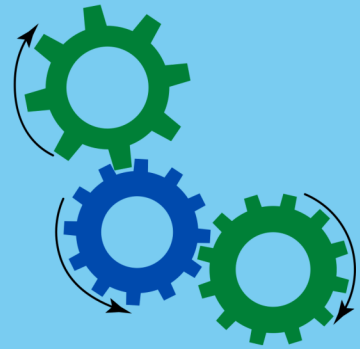


# EDUCATIONAL INSTITUTE ERP AUTOMATION

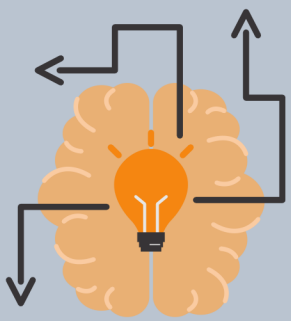
Story of how we automated the process of in-person internal marks entry distributed in six types with several filters

## THEIR STORY

The client is a prominent educational institute. In all courses, there are almost 7/8 divisions per course and nearly 130-150 student per division. For each student professors used enter the internal marks of all the students using 5 different filters with respect to individuals elective subjects and PRN. For all this they have to manage the whole process of marks entry manually.



## THE PROCESS



1. To enter the internal marks individual has to go through the maintained excel sheet which has all the filter values as well as student marks details.
2. According to mentioned filter values individual need to select the values for "Session", "Semester", "Subject", "Task Category", "Task List" and sort with "Student Name".
3. Compare the PRN with the excel sheet PRN column and enter the respective marks in front of the particular student and select the option whether he submitted the test or not if he has zero marks.
4. At the end give the total count of zero mark entries and count of total entries.

## KPIs

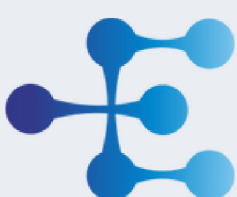
- Eliminate the possible human errors across the process of manual marks entry.
- Saving time and manpower required for the process.
- Providing maintenance assistance for the deployed automation
- Reducing the time required for marks entry and respective result declaration.



## EMERGEFLOW SOLUTIONS AND RESULTS



- The whole process is now fully automated and the RPA solution helped the institute in cutting off the time as well as efforts required for the process, so professors can now easily save the time doing the repetitive manual tasks and invest that in actual teaching and training purpose.
- RPA solution overall paced the result declaration process which used to take almost 25-30 days, after implementation of bot started taking nearly about a week or so.



**EmergefFlow**

SMALL DIFFERENCE. LARGE IMPACT.

[info@emergeflow.com](mailto:info@emergeflow.com) | [www.emergeflow.com](http://www.emergeflow.com)